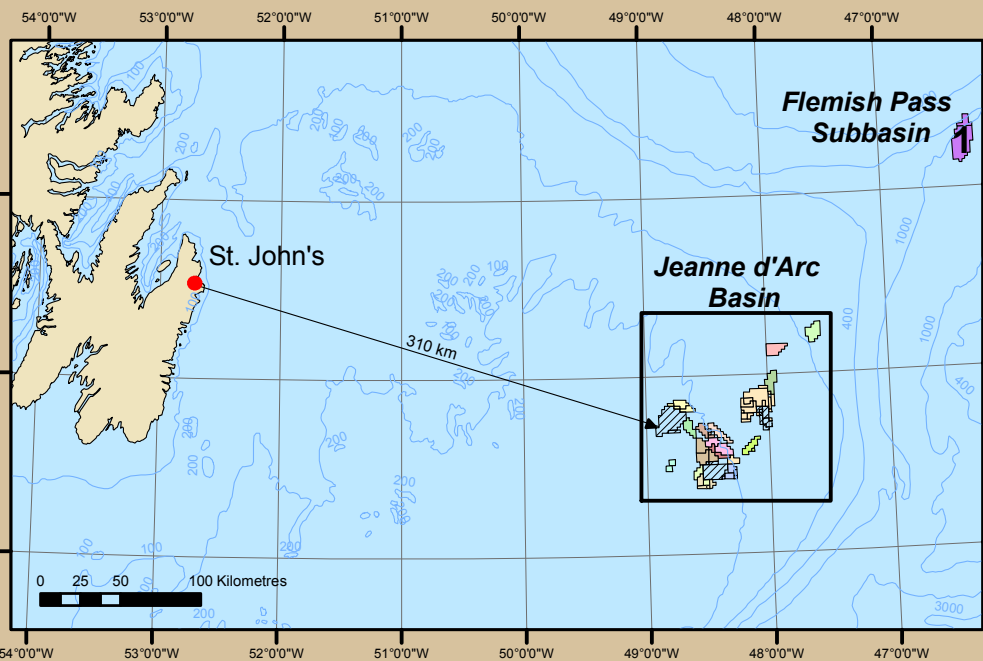
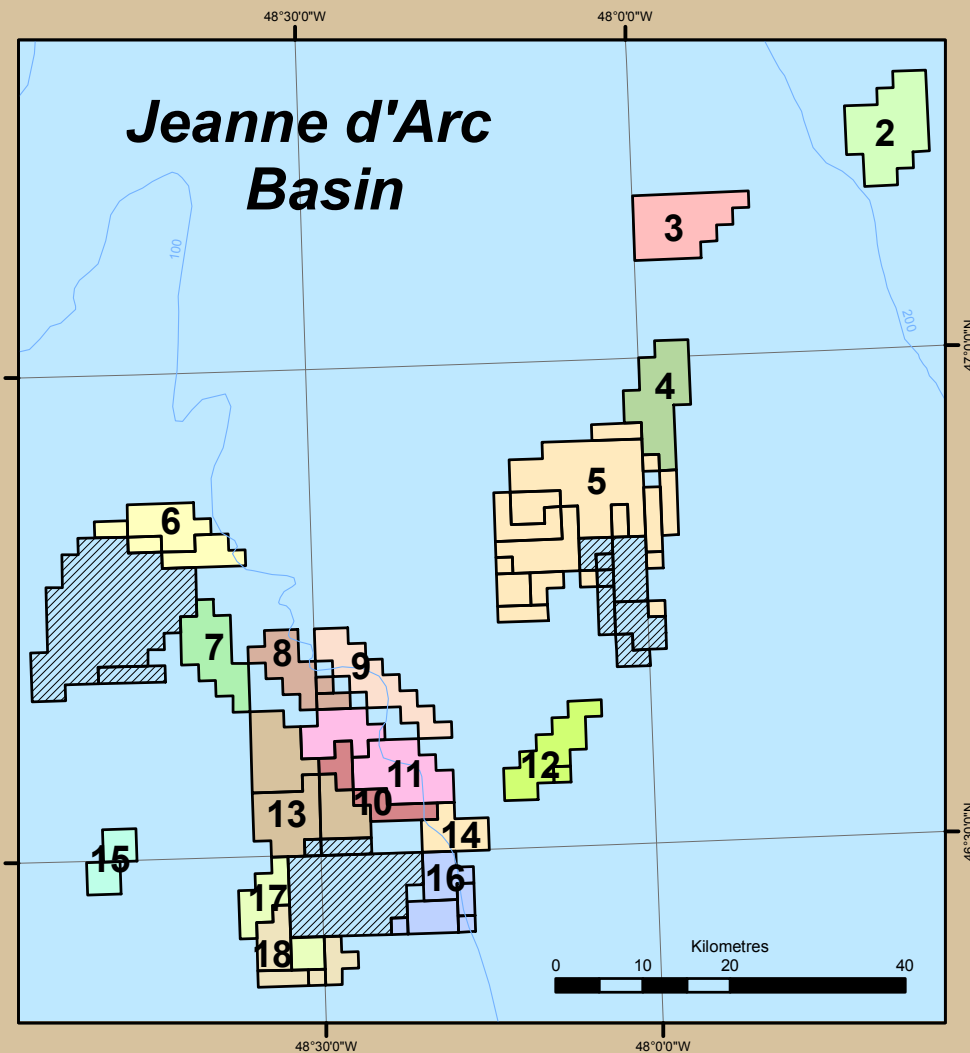

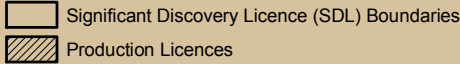


# Significant Discovery Areas - North Grand Banks

|    | <i>Discovery Well</i> | <i>Associated SDL's</i>  |
|----|-----------------------|--|
| 1  | Mizzen O-16           | 1047, 1048   |
| 2  | North Dana I-43       | 200A, 200B, 200C   |
| 3  | South Tempest G-88    | 197  |
| 4  | Trave E-87            | 1031   |
| 5  | Whiterose N-22        | 1018, 1019, 1020, 1023, 1024, 1025, 1026<br>1027, 1028, 1029, 1030, 1044, 1045 |
| 6  | Nautilus C-92         | 1001, 1041   |
| 7  | Mara M-54             | 1002   |
| 8  | South Mara C-13       | 1003, 1004, 1005   |
| 9  | North Ben Nevis P-93  | 1008   |
| 10 | West Ben Nevis B-75   | 1010   |
| 11 | Ben Nevis I-45        | 1009, 1042   |
| 12 | Fortune G-57          | 1011, 1012   |
| 13 | Hebron I-13           | 1006, 1007, 1046   |
| 14 | West Bonne Bay C-23   | 1040   |
| 15 | East Rankin H-21      | 1035, 1036   |
| 16 | Springdale M-29       | 1013, 1014, 1015, 1016, 1017   |
| 17 | Terra Nova K-08       | 208A, 1050   |
| 18 | King's Cove A-26      | 1037, 1038, 1039, 1049   |




 Fifth Floor, TD Place Phone: (709) 778-1400  
 140 Water Street Fax: (709) 778-1473  
 St. John's, NL Website: www.cnlopb.ni.ca  
 Canada A1C 6H6



The coordinates provided are only approximates as they have been derived assuming that the sections are bounded on the north and south sides by parallels of latitude.

*UTM 22 Projection (NAD 83)*

Drawn by: Lorie Hopkins Date: 3-April-2012